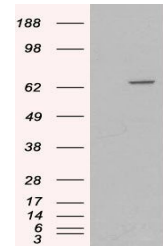


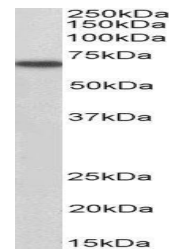
Product Datasheet

MTM1 antibody (orb18508)

Description	Goat polyclonal antibody to MTM1
Species/Host	Goat
Reactivity	Bovine, Canine, Human, Mouse
Conjugation	Unconjugated
Tested Applications	ELISA, IHC, WB
Target	MTM1
Preservatives	Supplied at 0.5 mg/ml in Tris saline, 0.02% sodium azide, pH 7.3 with 0.5% bovine serum albumin. Aliquot and store at -20°C. Minimize freezing and thawing.
Storage	Aliquot and store at -20°C. Minimize freezing and thawing.
Note	For research use only
Application notes	ELISA: Peptide ELISA: antibody detection limit dilution 1:16000.WB: Approx 70kDa band observed in lysates of Human Muscle and of cell line HepG2 (calculated MW of 69.9kDa according to NP_000243.1). In transfected HEK293 transiently expressing MTM1 a band of approx. 65kDa is observed. This band is not observed in the non-transfected
Protein Sequence	SSPSQMMPHVQTHF
Clonality	Polyclonal
MW	69.9
Entrez	4534
Dilution Range	ELISA: 1:16000, WB: 1-3 µg/ml, IHC-P: 10 µg/ml
Expiration Date	12 months from date of receipt.



Western blot analysis of HEK293 lysate u...



Western blot analysis of HepG2 cell lysa...



Western blot analysis of Human Skeletal ...