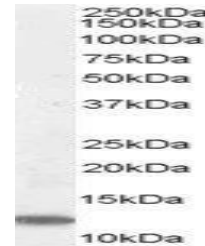


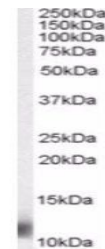
## Product Datasheet

### RPS27 antibody (orb18500)

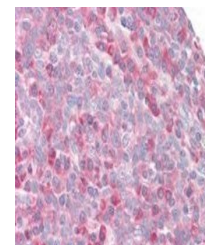
<b>Description</b>	Goat polyclonal antibody to RPS27
<b>Species/Host</b>	Goat
<b>Reactivity</b>	Human, Mouse, Rat
<b>Conjugation</b>	Unconjugated
<b>Tested Applications</b>	ELISA, IHC, WB
<b>Target</b>	MPS1 / RPS27
<b>Preservatives</b>	Supplied at 0.5 mg/ml in Tris saline, 0.02% sodium azide, pH 7.3 with 0.5% bovine serum albumin. Aliquot and store at -20°C. Minimize freezing and thawing.
<b>Storage</b>	Aliquot and store at -20°C. Minimize freezing and thawing.
<b>Note</b>	For research use only
<b>Application notes</b>	ELISA: Peptide ELISA: antibody detection limit dilution 1:64000.WB: Approx 12kDa band observed in lysates of T-cell line Jurkat (calculated MW of 9.5kDa according to NP_001021.1). Recommended concentration: 0.05-0.2 µg/ml.
<b>Protein Sequence</b>	PLAKDLLHPSPEE
<b>Clonality</b>	Polyclonal
<b>MW</b>	9.5
<b>Entrez</b>	<a href="#">6232</a>
<b>Dilution Range</b>	ELISA: 1:128000, WB: 0.03-0.1 µg/ml, IHC-P: 3.75 µg/ml
<b>Expiration Date</b>	12 months from date of receipt.



Western blot analysis of Jurkat lysate u...



Western blot analysis of Jurkat lysate u...



Immunohistochemical staining of Human To...