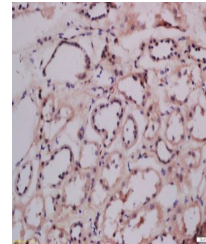


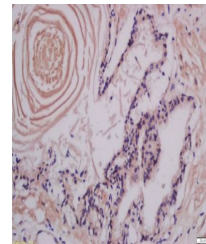
Product Datasheet

LMAN1 antibody (orb184965)

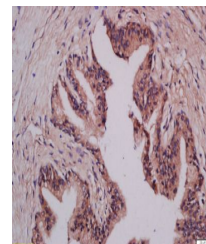
Description	LMAN1 antibody
Species/Host	Rabbit
Reactivity	Human
Conjugation	Unconjugated
Tested Applications	ELISA, ICC, IF, IHC-Fr, IHC-P, WB
Immunogen	KLH conjugated synthetic peptide derived from human LMAN1 (31-130/510 aa)
Target	LMAN1
Preservatives	0.01M TBS(pH7.4) with 1% rAlbumin, 0.03% Proclin300 and 50% Glycerol.
Form/Appearance	Liquid
Concentration	1mg/ml
Storage	Shipped at 4°C. Store at -20 °C for one year. Avoid repeated freeze/thaw cycles.
Note	For research use only
Isotype	IgG
Clonality	Polyclonal
MW	54 kDa
Uniprot ID	P49257
Expiration Date	12 months from date of receipt.



Immunohistochemical staining of human ki...



Immunohistochemical staining of human pr...



Immunohistochemical staining of human pr...