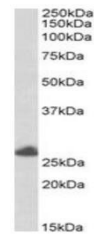


Product Datasheet

RNF35 antibody (orb18488)

Description	Goat polyclonal to RNF35
Species/Host	Goat
Reactivity	Human
Conjugation	Unconjugated
Tested Applications	ELISA, WB
Target	RNF35 / TRIM40
Preservatives	Supplied at 0.5 mg/ml in Tris saline, 0.02% sodium azide, pH 7.3 with 0.5% bovine serum albumin. Aliquot and store at -20°C. Minimize freezing and thawing.
Storage	Aliquot and store at -20°C. Minimize freezing and thawing.
Note	For research use only
Application notes	ELISA: Peptide ELISA: antibody detection limit dilution 1:32000.WB: Approx. 45kDa band observed in Human Brain lysates at 0.5-1ug of primary, this band was successfully blocked by incubation with the immunising peptide. Please note that the band we observe is different from the predicted size of approx. 26kDa according to NP_619645. Currently we cannot find an explanation for this in the literature. We would appreciate any feedback from people in the field - have any results been reported with other antibodies/lysates Have any splice variants/modified forms been reported
Protein Sequence	GVSELLLQPPQKL
Clonality	Polyclonal
MW	26.1
Entrez	135644
Dilution Range	ELISA: 1:32000, WB: 0.5-2 µg/ml
Expiration Date	12 months from date of receipt.



Western blot analysis of Human Placenta ...