

## Product Datasheet

### CARD11 antibody (orb18487)

## Description

Goat polyclonal antibody to CARD11

## Species/Host

Goat

## Reactivity

Bovine, Canine, Human, Mouse

## Conjugation

Unconjugated

## Tested

ELISA, IHC, WB

## Applications

## Target

CARD11

## Preservatives

Supplied at 0.5 mg/ml in Tris saline, 0.02% sodium azide, pH 7.3 with 0.5% bovine serum albumin. Aliquot and store at -20°C. Minimize freezing and thawing.

## Storage

Aliquot and store at -20°C. Minimize freezing and thawing.

## Note

For research use only

## Application notes

ELISA: Peptide ELISA: antibody detection limit dilution 1:32000. IHC: Immunohistochemistry: In paraffin embedded Human Spleen shows nuclear staining. Recommended concentration, 2-5ug/ml. WB: Approx 150+65kDa bands observed in lysates of cell line Jurkat (calculated MW of 133kDa according to NP\_115791.2). A similar pattern was observed in HEK293 transiently expressing CARD11 (picture not shown). These bands are not observed in the non-transfected HEK293. Recommended concentration: 1-3 µg/ml. An additional band of unknown identity was also consistently observed at 60kDa. This band was successfully blocked by incubation with the immunising peptide. We would appreciate any feedback from people in the field - have any such results been reported with other antibodies/lysates Have any further splice variants/modified forms been reported

## Protein Sequence

QRKTIWVDEDQL

## Clonality

Polyclonal

## MW

133

## Entrez

[84433](https://www.ncbi.nlm.nih.gov/entrez/query.fcgi?cmd=Retrieve&db=PubMed&list_uids=84433)

## Dilution Range

ELISA: 1:32000, WB: 1-3 µg/ml, IHC-P: 2-5 µg/ml

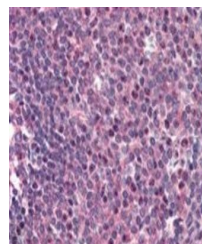
## Expiration Date

12 months from date of receipt.

250kDa  
150kDa  
100kDa

50kDa  
37kDa  
25kDa  
20kDa  
15kDa

Western blot analysis  
of HEK293 cells us...



Immunohistochemical  
staining of Human  
Sp...