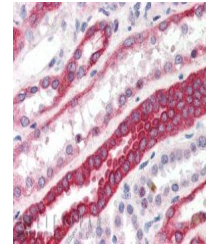


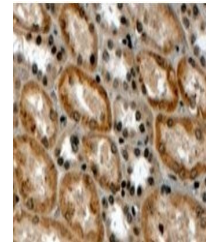
Product Datasheet

RNF34 antibody (orb18485)

Description	Goat polyclonal antibody to RNF34
Species/Host	Goat
Reactivity	Bovine, Canine, Human, Mouse, Rat
Conjugation	Unconjugated
Tested Applications	ELISA, IHC
Target	RNF34 / RFI (N Terminus)
Preservatives	Supplied at 0.5 mg/ml in Tris saline, 0.02% sodium azide, pH 7.3 with 0.5% bovine serum albumin. Aliquot and store at -20°C. Minimize freezing and thawing.
Storage	Aliquot and store at -20°C. Minimize freezing and thawing.
Note	For research use only
Application notes	ELISA: Peptide ELISA: antibody detection limit dilution 1:32000.IHC: In paraffin embedded Human Kidney shows strong staining of cytoplasm in DCT. Recommended concentration, 3-5ug/ml.WB: No signal obtained yet but low background observed in Human Testis lysate at up to 1 µg/ml. We would appreciate any feedback from people in the field - have any results been reported with other antibodies/lysates
Protein Sequence	KAGATSMWASCC
Clonality	Polyclonal
MW	41.8; 41.6
Entrez	80196
Dilution Range	ELISA: 1:32000, WB: 1 µg/ml, IHC-P: 4-8µg/ml
Expiration Date	12 months from date of receipt.



Immunohistochemical staining of Human Ki...



Immunohistochemical staining of Human Ki...