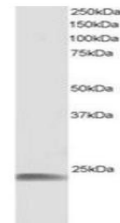


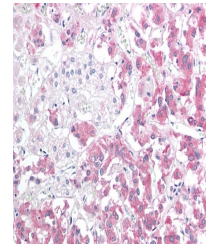
Product Datasheet

HSPB8 antibody (orb18463)

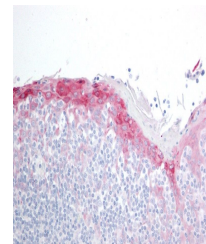
Description	Goat polyclonal antibody to HSPB8
Species/Host	Goat
Reactivity	Human
Conjugation	Unconjugated
Tested Applications	ELISA, IHC, WB
Target	H11 / HSP22
Preservatives	Supplied at 0.5 mg/ml in Tris saline, 0.02% sodium azide, pH 7.3 with 0.5% bovine serum albumin. Aliquot and store at -20°C. Minimize freezing and thawing.
Storage	Aliquot and store at -20°C. Minimize freezing and thawing.
Note	For research use only
Application notes	ELISA: Peptide ELISA: antibody detection limit dilution 1:32000.WB: Approx 20-25kDa band seen in human skeletal muscle lysate [Predicted MW of approx. 22kDa according to NP_055180]. Recommended for use at 0.5-1 µg/ml.
Protein Sequence	NELPQDSQEVCT
Clonality	Polyclonal
MW	21.6
Entrez	26353
Dilution Range	ELISA: 1:32000, WB: 0.5-1 µg/ml, IHC-P: 10 µg/ml
Expiration Date	12 months from date of receipt.



Western blot analysis of Human Muscle ly...



Immunohistochemical staining of Human Ad...



Immunohistochemical staining of Human To...