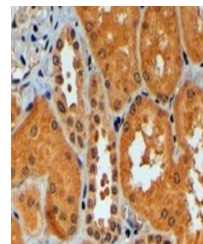


Product Datasheet

TRIM11 antibody (orb18462)

Description	Goat polyclonal antibody to TRIM11
Species/Host	Goat
Reactivity	Human
Conjugation	Unconjugated
Tested Applications	ELISA, IHC
Target	TRIM11
Preservatives	Supplied at 0.5 mg/ml in Tris saline, 0.02% sodium azide, pH 7.3 with 0.5% bovine serum albumin. Aliquot and store at -20°C. Minimize freezing and thawing.
Storage	Aliquot and store at -20°C. Minimize freezing and thawing.
Note	For research use only
Application notes	ELISA: Peptide ELISA: antibody detection limit dilution 1:16000.WB: No signal obtained yet but low background observed in human kidney, human brain, Raji and 293 lysates at upto 1 µg/ml. We would appreciate any feedback from people in the field - have any results been reported with other antibodies/lysates
Protein Sequence	CRPKGGSGDTLAPQ
Clonality	Polyclonal
MW	52.8
Entrez	81559
Dilution Range	ELISA: 1:32000, WB: 1 µg/ml, IHC-P: 4-6µg/ml
Expiration Date	12 months from date of receipt.



Immunohistochemical staining of Human Ki...