
Product Datasheet

STRADB antibody (orb18453)

Description

Goat polyclonal antibody to STRADB

Species/Host

Goat

Reactivity

Bovine, Canine, Human

Conjugation

Unconjugated

Tested Applications

ELISA, IF, IHC, WB

Applications
Target

ALS2CR2 / ILPIP

Preservatives

Supplied at 0.5 mg/ml in Tris saline, 0.02% sodium azide, pH 7.3 with 0.5% bovine serum albumin. Aliquot and store at -20°C. Minimize freezing and thawing.

Storage

Aliquot and store at -20°C. Minimize freezing and thawing.

Note

For research use only

Application notes

ELISA: Peptide ELISA: antibody detection limit dilution 1:32000. IHC: Immunohistochemistry: In paraffin embedded Human Heart shows staining of myocardial fibres in transverse section. Recommended concentration, 3-5ug/ml. WB: Approx 35kDa band observed in Human Heart, Liver and Muscle lysates (calculated MW of 47.0kDa according to NP_061041.2 (alpha isoform) and 31.2kDa according to AAF71042.1(beta isoform). In transfected HEK293 transiently expressing ILPIP a band of approx. 48kDa is observed. This band is not observed in the non-transfected HEK293. Recommended concentration 1-3 µg/ml.

Protein Sequence

CDFPDEKDSYWEF

Clonality

Polyclonal

MW

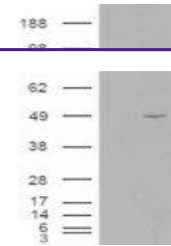
47.0, 31.2

Entrez
[55437](#)
Dilution Range

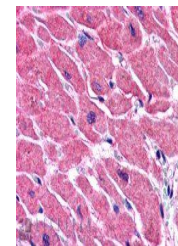
ELISA: 1:32000, WB: 1-3 µg/ml, IHC-P: 3-5 µg/ml

Expiration Date

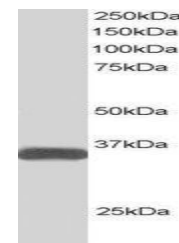
12 months from date of receipt.



HEK293 overexpressing ILPIP (RC203432) a...



orb18453 (3.8ug/ml) staining of paraffin...



orb18453 (1ug/ml) staining of Human Hear...