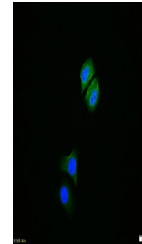


Product Datasheet

IKB alpha (phospho-Ser36) antibody (orb184420)

Description	IKB alpha (phospho-Ser36) antibody
Species/Host	Rabbit
Reactivity	Human, Mouse
Conjugation	Unconjugated
Tested Applications	ICC, IHC-P, WB
Immunogen	KLH conjugated Synthesised phosphopeptide derived from human IKB alpha around the phosphorylation site of Ser36 (LD(p-S)MK)
Target	phospho-IKB alpha (Ser36)
Preservatives	0.01M TBS(pH7.4) with 1% rAlbumin, 0.03% Proclin300 and 50% Glycerol.
Form/Appearance	Liquid
Concentration	1mg/ml
Storage	Maintain refrigerated at 2-8°C for up to 2 weeks. For long term storage store at -20°C in small aliquots to prevent freeze-thaw cycles.
Note	For research use only
Isotype	IgG
Clonality	Polyclonal
MW	35 kDa
Uniprot ID	P25963
Dilution Range	WB=1:500-2000, IHC-P=1:100-500, ICC=1:100, IHC-F=1:100-500, IF=1:100-500
Expiration Date	12 months from date of receipt.



ICC analysis of HepG2 cell using phospho...