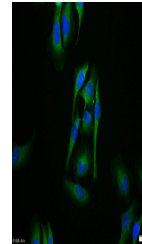


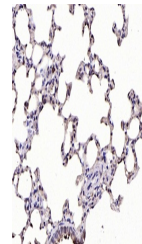
Product Datasheet

IKB alpha (phospho-Ser32) antibody (orb184419)

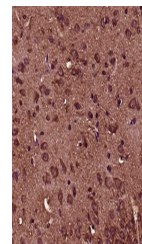
Description	IKB alpha (phospho-Ser32) antibody
Species/Host	Rabbit
Reactivity	Human, Mouse, Rat
Conjugation	Unconjugated
Tested Applications	ICC, IHC-P
Immunogen	KLH conjugated Synthesised phosphopeptide derived from human IKB alpha around the phosphorylation site of Ser32 (D(p-S)GL)
Target	phospho-IKB alpha (Ser32)
Preservatives	0.01M TBS(pH7.4) with 1% rAlbumin, 0.03% Proclin300 and 50% Glycerol.
Form/Appearance	Liquid
Concentration	1mg/ml
Storage	Maintain refrigerated at 2-8°C for up to 2 weeks. For long term storage store at -20°C in small aliquots to prevent freeze-thaw cycles.
Note	For research use only
Isotype	IgG
Clonality	Polyclonal
MW	36 kDa
Uniprot ID	P25963
Dilution Range	IHC-P=1:100-500, ICC=1:100, IHC-F=1:100-500, IF=1:100-500
Expiration Date	12 months from date of receipt.



ICC analysis of HeLa cell using phospho-...



IHC-P analysis of rat lung using phospho...



IHC-P analysis of Mouse brain using phos...