
Product Datasheet

Insulin Receptor (phospho-Tyr999) antibody (orb184367)

Description

Insulin Receptor (phospho-Tyr999) antibody

Species/Host

Rabbit

Reactivity

Human, Rat

Conjugation

Unconjugated

Tested Applications

FC, IHC-P, WB

Immunogen

KLH conjugated Synthesised phosphopeptide derived from human Insulin Receptor around the phosphorylation site of Tyr999 (PE(p-Y)LS)

Target

Phospho-Insulin Receptor (Tyr999)

Preservatives

0.01M TBS(pH7.4) with 1% rAlbumin, 0.03% Proclin300 and 50% Glycerol.

Form/Appearance

Liquid: 0.01M TBS(pH7.4) with 1% rAlbumin, 0.03% Proclin300 and 50% Glycerol.

Concentration

1mg/ml

Storage

Shipped at 4°C. Store at -20 °C for one year. Avoid repeated freeze/thaw cycles.

Note

For research use only

Isotype

IgG

Clonality

Polyclonal

Purity

affinity purified by Protein A

MW

70/152kDa

CAS Number

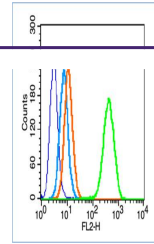
3

Uniprot ID
P06213
Dilution Range

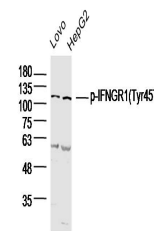
WB=1:500-2000, IHC-P=1:100-500, Flow-Cyt=1µg/Test, IHC-F=1:100-500, IF=1:100-500

Expiration Date

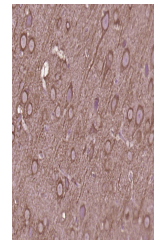
12 months from date of receipt.



Flow cytometric analysis of Blank contro...



Western blot analysis of Lovo (Human)Cel...



IHC-P image of rat brain tissue using US...