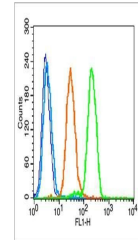


Product Datasheet

Hsp90 beta (phospho-Ser226) antibody (orb184233)

Description	Hsp90 beta (phospho-Ser226) antibody
Species/Host	Rabbit
Reactivity	Human
Conjugation	Unconjugated
Tested Applications	FC
Immunogen	KLH conjugated synthesised phosphopeptide derived from human Hsp90 beta around the phosphorylation site of Ser226 (EI(p-S)DD)
Target	phospho-Hsp90 beta (Ser226)
Preservatives	0.01M TBS(pH7.4) with 1% rAlbumin, 0.03% Proclin300 and 50% Glycerol.
Form/Appearance	Liquid
Concentration	1mg/ml
Storage	Shipped at 4°C. Store at -20 °C for one year. Avoid repeated freeze/thaw cycles.
Note	For research use only
Isotype	IgG
Clonality	Polyclonal
MW	90 kDa
Uniprot ID	P08238
Dilution Range	Flow-Cyt=1µg/Test
Expiration Date	12 months from date of receipt.



Flow cytometric analysis of A549 Cell us...