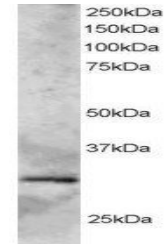


Product Datasheet

SYF2 antibody (orb18413)

Description	Goat polyclonal antibody to SYF2
Species/Host	Goat
Reactivity	Bovine, Canine, Human, Mouse, Rat
Conjugation	Unconjugated
Tested Applications	ELISA, WB
Target	GCIP-interacting protein p29
Preservatives	Supplied at 0.5 mg/ml in Tris saline, 0.02% sodium azide, pH 7.3 with 0.5% bovine serum albumin. Aliquot and store at -20°C. Minimize freezing and thawing.
Storage	Aliquot and store at -20°C. Minimize freezing and thawing.
Note	For research use only
Application notes	ELISA: Peptide ELISA: antibody detection limit dilution 1:8000.WB: Approx 26kDa band seen in Mouse Heart lysate and 30kDa band seen in Human Heart lysate (Predicted MW of 28kDa according to NP_056299). Recommended for use at 0.5-3 µg/ml.
Protein Sequence	AEIKQLNLERGTAV
Clonality	Polyclonal
MW	28.7; 23.6
Entrez	25949
Dilution Range	ELISA: 1:8000, WB: 0.5-3 µg/ml
Expiration Date	12 months from date of receipt.



orb18413 staining (2ug/ml) of Human Hear...