

Product Datasheet

Goat anti-SAP130 / SF3B3 Antibody (orb18410)

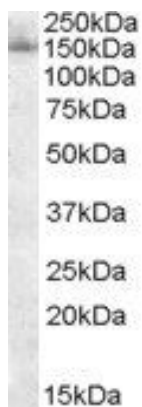
Description	Goat polyclonal antibody to SF3B3
Species/Host	Goat
Reactivity	Bovine, Canine, Human, Mouse, Rat
Conjugation	Unconjugated
Tested Applications	ELISA, WB
Target	SAP130 / SF3B3
Preservatives	Supplied at 0.5 mg/ml in Tris saline, 0.02% sodium azide, pH 7.3 with 0.5% bovine serum albumin. Aliquot and store at -20°C. Minimize freezing and thawing.
Storage	Aliquot and store at -20°C. Minimize freezing and thawing.
Note	For research use only
Application notes	ELISA: Peptide ELISA: antibody detection limit dilution 1:2000.WB: Approx 150kDa band observed in nuclear lysates of cell line HeLa (calculated MW of 136kDa according to NP_036558.3). Recommended concentration: 0.1-0.3 µg/ml.
Protein Sequence	VSKKLEDIRTRYAF
Clonality	Polyclonal
MW	136
Entrez	23450
Dilution Range	ELISA: 1:2000, WB: 0.1-0.3 µg/ml
Expiration Date	12 months from date of receipt.

Biorbyt Ltd.

7 Signet Court, Swann's Road,
Cambridge, CB5 8LA, United Kingdom
Email: info@biorbyt.com, support@biorbyt.com
Phone: [+44 \(0\) 1223 859-353](tel:+44(0)1223859353) | Fax: [+1 \(415\) 651-8558](tel:+1(415)6518558)

Biorbyt LLC.

68 TW Alexander Drive,
Durham, NC, 27713, United States
Email: info@biorbyt.com, support@biorbyt.com
Phone: [+1 \(415\) 906-5211](tel:+1(415)9065211) | Fax: [+1 \(415\) 651-8558](tel:+1(415)6518558)



orb18410 staining (0.1ug/ml) of nuclear lysate from HeLa cells (RIPA buffer, 30ug total protein per lane). Primary incubated for 1 hour. Detected by western blot using chemiluminescence.

Biorbyt Ltd.

7 Signet Court, Swann's Road,
Cambridge, CB5 8LA, United Kingdom
Email: info@biorbyt.com, support@biorbyt.com
Phone: [+44 \(0\) 1223 859-353](tel:+44(0)1223859353) | Fax: [+1 \(415\) 651-8558](tel:+1(415)6518558)

Biorbyt LLC.

68 TW Alexander Drive,
Durham, NC, 27713, United States
Email: info@biorbyt.com, support@biorbyt.com
Phone: [+1 \(415\) 906-5211](tel:+1(415)9065211) | Fax: [+1 \(415\) 651-8558](tel:+1(415)6518558)