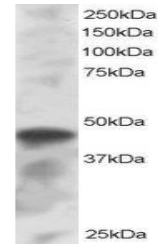


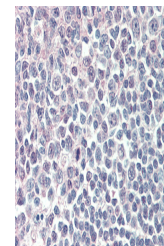
Product Datasheet

IRF8 antibody (orb18409)

Description	Goat polyclonal antibody to IRF8
Species/Host	Goat
Reactivity	Bovine, Human, Mouse, Rat
Conjugation	Unconjugated
Tested Applications	ELISA, IHC, WB
Target	ICSBP1 / IRF8
Preservatives	Supplied at 0.5 mg/ml in Tris saline, 0.02% sodium azide, pH 7.3 with 0.5% bovine serum albumin. Aliquot and store at -20°C. Minimize freezing and thawing.
Storage	Aliquot and store at -20°C. Minimize freezing and thawing.
Note	For research use only
Application notes	ELISA: Peptide ELISA: antibody detection limit dilution 1:8000.WB: Approx 45-50kDa band seen in K562 lysate (Predicted MW of 47kDa according to NP_002154). Recommended for use at 0.5-2 µg/ml.
Protein Sequence	QRSFFRENQQITV
Clonality	Polyclonal
MW	48.4
Entrez	3394
Dilution Range	ELISA: 1:8000, WB: 0.5-2 µg/ml, IHC-P: 5 µg/ml
Expiration Date	12 months from date of receipt.



orb18409 staining (1µg/ml) of K562 lysat...



orb18409 (5µg/ml) staining of paraffin ...