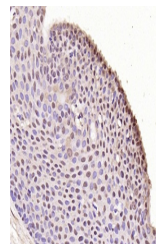


Product Datasheet

pC Myc antibody (orb1840)

Description	pC Myc antibody
Species/Host	Rabbit
Reactivity	Human, Mouse
Conjugation	Unconjugated
Tested Applications	FC, IHC-P
Immunogen	KLH conjugated synthesised phosphopeptide derived from human C-Myc around the phosphorylation site of Ser373 (KR(p-S)F)
Target	phospho-C-Myc (Ser373)
Preservatives	0.01M TBS(pH7.4) with 1% rAlbumin, 0.03% Proclin300 and 50% Glycerol.
Form/Appearance	Liquid
Concentration	1mg/ml
Storage	Maintain refrigerated at 2-8°C for up to 2 weeks. For long term storage store at -20°C in small aliquots to prevent freeze-thaw cycles.
Note	For research use only
Isotype	IgG
Clonality	Polyclonal
MW	49 kDa
Uniprot ID	P01106
Dilution Range	IHC-P=1:100-500, Flow-Cyt=1µg/Test
Expiration Date	12 months from date of receipt.



IHC-P analysis of human laryngeal carcin...