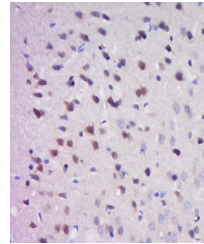


Product Datasheet

Gastrin Receptor Releasing Peptide antibody (orb183991)

Description	Gastrin Receptor Releasing Peptide antibody
Species/Host	Rabbit
Reactivity	Rat
Conjugation	Unconjugated
Tested Applications	ELISA, ICC, IF, IHC-Fr, IHC-P
Immunogen	KLH conjugated synthetic peptide derived from mouse Gastrin Releasing Peptide (24-52/146 aa)
Target	GRP
Preservatives	0.01M TBS(pH7.4) with 1% rAlbumin, 0.03% Proclin300 and 50% Glycerol.
Form/Appearance	Liquid
Concentration	1mg/ml
Storage	Shipped at 4°C. Store at -20 °C for one year. Avoid repeated freeze/thaw cycles.
Note	For research use only
Isotype	IgG
Clonality	Polyclonal
MW	3 kDa
Uniprot ID	P07492
Expiration Date	12 months from date of receipt.



Immunohistochemical staining of rat brai...