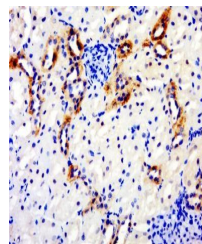


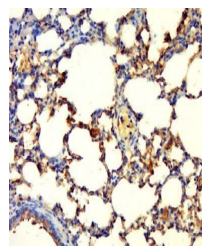
Product Datasheet

GPD1L antibody (orb183880)

Description	GPD1L antibody
Species/Host	Rabbit
Reactivity	Rat
Conjugation	Unconjugated
Tested Applications	ELISA, ICC, IF, IHC-Fr, IHC-P
Immunogen	KLH conjugated synthetic peptide derived from human GPD1L (201-300/351 aa)
Target	GPD1L
Preservatives	0.01M TBS(pH7.4) with 1% rAlbumin, 0.03% Proclin300 and 50% Glycerol.
Form/Appearance	Liquid
Concentration	1mg/ml
Storage	Shipped at 4°C. Store at -20 °C for one year. Avoid repeated freeze/thaw cycles.
Note	For research use only
Isotype	IgG
Clonality	Polyclonal
MW	38 kDa
Uniprot ID	Q8N335
Expiration Date	12 months from date of receipt.



Immunohistochemical staining of rat kidn...



Immunohistochemical staining of Rat lung...