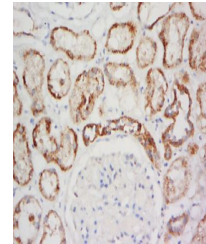


Product Datasheet

GPCR ORF4 antibody (orb183876)

Description	GPCR ORF4 antibody
Species/Host	Rabbit
Reactivity	Human
Conjugation	Unconjugated
Tested Applications	IF, IHC-Fr, IHC-P
Immunogen	KLH conjugated synthetic peptide derived from human GPCR ORF4/GPCR GPR137 (201-300/417 aa)
Target	GPCR ORF4/GPCR GPR137
Preservatives	0.01M TBS(pH7.4) with 1% rAlbumin, 0.03% Proclin300 and 50% Glycerol.
Form/Appearance	Liquid
Concentration	1mg/ml
Storage	Shipped at 4°C. Store at -20 °C for one year. Avoid repeated freeze/thaw cycles.
Note	For research use only
Isotype	IgG
Clonality	Polyclonal
MW	46 kDa
Uniprot ID	Q96N19
Dilution Range	IHC-P=1:100-500, IHC-F=1:100-500, IF=1:100-500, WB=1:500-2000, ICC=1:100-500, ELISA=1:5000-10000
Expiration Date	12 months from date of receipt.



Immunohistochemical staining of human ki...