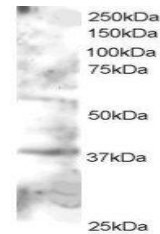


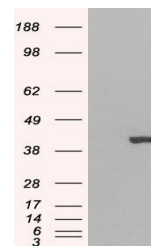
Product Datasheet

GRAP2 antibody (orb18380)

Description	Goat polyclonal antibody to GRAP2
Species/Host	Goat
Reactivity	Bovine, Canine, Human, Mouse, Porcine, Rat
Conjugation	Unconjugated
Tested Applications	ELISA, WB
Target	GRAP2 / GRID / Grf40
Preservatives	Supplied at 0.5 mg/ml in Tris saline, 0.02% sodium azide, pH 7.3 with 0.5% bovine serum albumin. Aliquot and store at -20°C. Minimize freezing and thawing.
Storage	Aliquot and store at -20°C. Minimize freezing and thawing.
Note	For research use only
Application notes	ELISA: Peptide ELISA: antibody detection limit dilution 1:32000.WB: Approx 38kDa band observed lysates of cell line Jurkat (calculated MW of 37.9kDa according to NP_004801.1). In transfected HEK293 transiently expressing GRAP2 a band of approx. 40kDa is observed. This band is not observed in the non-transfected HEK293. Recommended concentration: 1-3 µg/ml.
Protein Sequence	GLFPANYVAPMTR
Clonality	Polyclonal
MW	37.9
Entrez	9402
Dilution Range	ELISA: 1:32000, WB: 1-3 µg/ml
Expiration Date	12 months from date of receipt.



Western blot analysis of Jurkat lysate u...



Western blot analysis of HEK293 Cell usi...