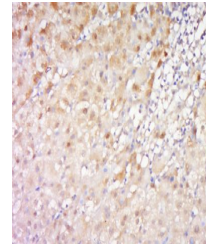


Product Datasheet

FRY antibody (orb183774)

Description	FRY antibody
Species/Host	Rabbit
Reactivity	Human
Conjugation	Unconjugated
Tested Applications	IF, IHC-Fr, IHC-P
Immunogen	KLH conjugated synthetic peptide derived from human FRY/C13orf14 (101-200/3013 aa)
Target	FRY/C13orf14
Preservatives	0.01M TBS(pH7.4) with 1% rAlbumin, 0.03% Proclin300 and 50% Glycerol.
Form/Appearance	Liquid
Concentration	1mg/ml
Storage	Shipped at 4°C. Store at -20 °C for one year. Avoid repeated freeze/thaw cycles.
Note	For research use only
Isotype	IgG
Clonality	Polyclonal
MW	339 kDa
Uniprot ID	Q5TBA9
Dilution Range	IHC-P=1:100-500, IHC-F=1:100-500, IF=1:100-500, ICC=1:100-500, ELISA=1:5000-10000
Expiration Date	12 months from date of receipt.



Immunohistochemical staining of human he...