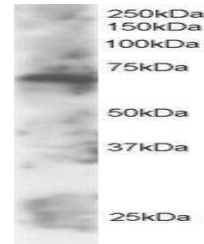


## Product Datasheet

### SWAP70 antibody (orb18369)

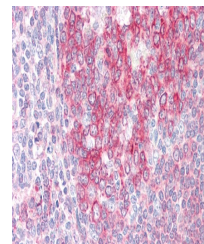
<b>Description</b>	Goat polyclonal to SWAP70
<b>Species/Host</b>	Goat
<b>Reactivity</b>	Human, Mouse, Rat
<b>Conjugation</b>	Unconjugated
<b>Tested Applications</b>	ELISA, IHC, WB
<b>Target</b>	SWAP70
<b>Preservatives</b>	Supplied at 0.5 mg/ml in Tris saline, 0.02% sodium azide, pH 7.3 with 0.5% bovine serum albumin. Aliquot and store at -20°C. Minimize freezing and thawing.
<b>Storage</b>	Aliquot and store at -20°C. Minimize freezing and thawing.
<b>Note</b>	For research use only
<b>Application notes</b>	ELISA: Peptide ELISA: antibody detection limit dilution 1:64000.WB: Approx 70kDa band seen in Daudi lysate. Recommended for use at 1-3 µg/ml.
<b>Protein Sequence</b>	EEREKNWKEKKTTE
<b>Clonality</b>	Polyclonal
<b>MW</b>	69
<b>Dilution Range</b>	ELISA: 1:128000, WB: 0.1-0.3 µg/ml, IHC-P: 5 µg/ml
<b>Expiration Date</b>	12 months from date of receipt.



orb18369 staining (2ug/ml) of Daudi lysa...



WB analysis of Human Lymph Node lysate u...



Immunohistochemical staining of Human To...