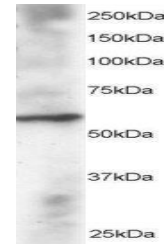


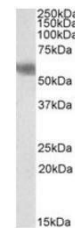
Product Datasheet

DUSP8 antibody (orb18363)

Description	Goat polyclonal antibody to DUSP8
Species/Host	Goat
Reactivity	Bovine, Human, Mouse, Rat
Conjugation	Unconjugated
Tested Applications	ELISA, WB
Target	DUSP8 / HVH5
Preservatives	Supplied at 0.5 mg/ml in Tris saline, 0.02% sodium azide, pH 7.3 with 0.5% bovine serum albumin. Aliquot and store at -20°C. Minimize freezing and thawing.
Storage	Aliquot and store at -20°C. Minimize freezing and thawing.
Note	For research use only
Application notes	ELISA: Peptide ELISA: antibody detection limit dilution 1:4000.WB: Approx 60-65kDa bands seen in Human Heart lysate. Recommended for use at 1-3 µg/ml.
Protein Sequence	AGDRLPRKVMDAK
Clonality	Polyclonal
MW	65.8
Entrez	1850
Dilution Range	ELISA: 1:4000, WB: 1-3 µg/ml
Expiration Date	12 months from date of receipt.



Western blot analysis of Human Heart lys...



Western blot analysis of Human Cerebellu...