

---

## Product Datasheet

### RACGAP1 antibody (orb18360)

**Description**

Goat polyclonal antibody to RACGAP1

**Species/Host**

Goat

**Reactivity**

Bovine, Canine, Human

**Conjugation**

Unconjugated

**Tested Applications**

ELISA, FC, IF, IHC, WB

**Target**

RACGAP1 / MgcRacGAP

**Preservatives**

Supplied at 0.5 mg/ml in Tris saline, 0.02% sodium azide, pH 7.3 with 0.5% bovine serum albumin. Aliquot and store at -20°C. Minimize freezing and thawing.

**Storage**

Aliquot and store at -20°C. Minimize freezing and thawing.

**Note**

For research use only

**Application notes**

ELISA: Peptide ELISA: antibody detection limit dilution 1:32000.IHC: In paraffin embedded Human Testis, shows nuclear staining of many cells. Recommended concentration, 1µg/ml.WB: Approx 60kDa band observed in Human Testis lysates (calculated MW of 71.0kDa according to NP\_037409.2). The observed molecular weight corresponds to earlier findings in literature with different antibodies (Toure et al., J Biol Chem 1998 Mar 13;273(11):6019-23; PMID: 9497316). Recommended concentration: 0.1-0.3 µg/ml.

**Protein Sequence**

GRQGNFFASPMLK

**Clonality**

Polyclonal

**MW**

71.0; 63.9; 72.3; 61.9

**Entrez**
[29127](#)
**Dilution Range**

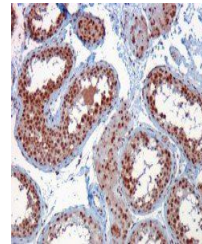
ELISA: 1:32000, WB: 0.3-1 µg/ml, IHC-P: 1 µg/ml

**Expiration Date**

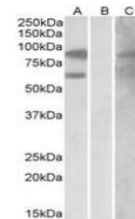
12 months from date of receipt.



Western blot analysis of Human Testis ly...



Immunohistochemical staining of Human Te...



Western blot analysis of HEK293 lysate u...