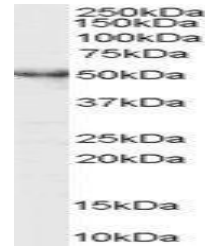


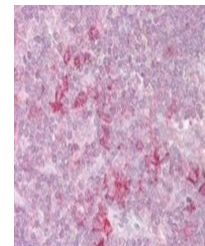
Product Datasheet

RP6-213H19.1 antibody (orb18355)

Description	Goat polyclonal antibody to RP6-213H19.1
Species/Host	Goat
Reactivity	Bovine, Canine, Human, Mouse, Porcine, Rat
Conjugation	Unconjugated
Tested Applications	ELISA, IHC, WB
Target	MST4
Preservatives	Supplied at 0.5 mg/ml in Tris saline, 0.02% sodium azide, pH 7.3 with 0.5% bovine serum albumin. Aliquot and store at -20°C. Minimize freezing and thawing.
Storage	Aliquot and store at -20°C. Minimize freezing and thawing.
Note	For research use only
Application notes	ELISA: Peptide ELISA: antibody detection limit dilution 1:32000.WB: Approx 50kDa band observed in lysates of cell lines HEK293, HepG2 and Jurkat (calculated MW of 46.5kDa according to NP_057626.2). Recommended concentration: 0.5-1.5 µg/ml.
Protein Sequence	KLIEKFQKCSADESP
Clonality	Polyclonal
MW	46.5; 37.8; 39.7
Dilution Range	ELISA: 1:32000, WB: 0.5-1.5 µg/ml, IHC-P: 2.5 µg/ml
Expiration Date	12 months from date of receipt.



Western blot analysis of Jurkat lysate u...



Immunohistochemical staining of Human Th...