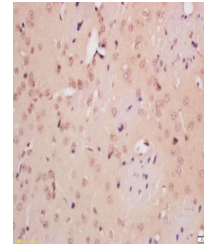


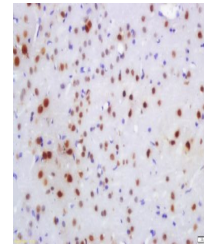
Product Datasheet

NeuN antibody (orb183495)

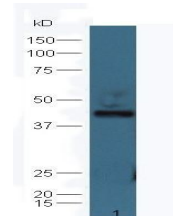
Description	NeuN antibody
Species/Host	Rabbit
Reactivity	Human, Rat
Conjugation	Unconjugated
Tested Applications	FC, ICC, IF, IHC-P
Immunogen	KLH conjugated synthetic peptide derived from human FOX3 (101-200/312 aa)
Target	NeuN
Preservatives	0.01M TBS(pH7.4) with 1% rAlbumin, 0.03% Proclin300 and 50% Glycerol.
Form/Appearance	Liquid
Concentration	1mg/ml
Storage	Shipped at 4°C. Store at -20 °C for one year. Avoid repeated freeze/thaw cycles.
Note	For research use only
Isotype	IgG
Clonality	Polyclonal
MW	34 kDa
Uniprot ID	A6NFN3
Dilution Range	IHC-P=1:100-500, ICC=1:100, IF=1:100-500, Flow-Cyt=1ug/test, IHC-F=1:100-500, ELISA=1:5000-10000
Expiration Date	12 months from date of receipt.



Immunohistochemical staining of rat brai...



Immunohistochemical staining of rat brai...



Western blot analysis of line1