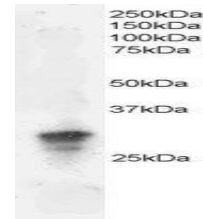


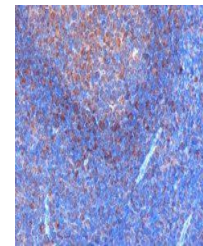
Product Datasheet

GRB2 antibody (orb18345)

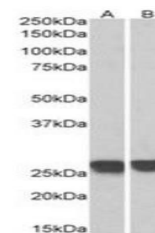
Description	Goat polyclonal antibody to GRB2
Species/Host	Goat
Reactivity	Bovine, Canine, Human, Mouse, Rat
Conjugation	Unconjugated
Tested Applications	ELISA, IHC, WB
Target	GRB2
Preservatives	Supplied at 0.5 mg/ml in Tris saline, 0.02% sodium azide, pH 7.3 with 0.5% bovine serum albumin. Aliquot and store at -20°C. Minimize freezing and thawing.
Storage	Aliquot and store at -20°C. Minimize freezing and thawing.
Note	For research use only
Application notes	ELISA: Peptide ELISA: antibody detection limit dilution 1:32000.IHC: In paraffin embedded Human Tonsil, stains mantle zone and to a lesser extent germinal centre. Recommended concentration, 0.1-0.3ug/ml.WB: Approx 30kDa band seen in Jurkat lysate. Recommended for use at 1-3 µg/ml.
Protein Sequence	PRNYVTPVNRNV
Clonality	Polyclonal
MW	25.2; 20.6
Entrez	2885
Dilution Range	ELISA: 1:32000, WB: 0.05-0.15 µg/ml, IHC-P: 1-2 µg/ml
Expiration Date	12 months from date of receipt.



Western blot analysis of Jurkat lysate u...



Immunohistochemical staining of Human To...



Western blot analysis of Mouse and Rat B...