

---

## Product Datasheet

### Estrogen Receptor alpha (phospho-Ser106) antibody (orb183443)

**Description**

Estrogen Receptor alpha (phospho-Ser106)


**Species/Host**

Rabbit

**Reactivity**

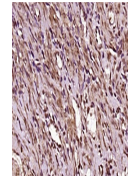
Human, Rat

**Conjugation**

Unconjugated

**Tested Applications**

FC, IHC-P


 IHC-P  
analysis of  
rat uterus  
tissue  
usin...

**Immunogen**

KLH conjugated Synthesised phosphopeptide derived from human ER alpha around the phosphorylation site of Ser106 (P(p-S)PL)

**Target**

Phospho-Estrogen Receptor alpha (Ser106)

**Preservatives**

0.01M TBS(pH7.4) with 1% rAlbumin, 0.03% Proclin300 and 50% Glycerol.

**Form/Appearance**

Liquid

**Concentration**

1mg/ml

**Storage**

Maintain refrigerated at 2-8°C for up to 2 weeks. For long term storage store at -20°C in small aliquots to prevent freeze-thaw cycles.

**Note**

For research use only

**Isotype**

IgG

**Clonality**

Polyclonal

**MW**

66 kDa

**Uniprot ID**
[P03372](#)
**Dilution Range**

IHC-P=1:100-500, Flow-Cyt=1µg/Test, IHC-F=1:100-500, ICC=1:100-500, IF=1:100-500, ELISA=1:5000-10000

**Expiration Date**

12 months from date of receipt.