

## Product Datasheet

### SH3GLB1 antibody (orb18342)

## Description

Goat polyclonal antibody to SH3GLB1

## Species/Host

Goat

## Reactivity

Bovine, Canine, Human, Mouse, Rat

## Conjugation

Unconjugated

## Tested

ELISA, FC, IHC, WB

## Applications

## Target

BIF-1 / SH3GLB1

## Preservatives

Supplied at 0.5 mg/ml in Tris saline, 0.02% sodium azide, pH 7.3 with 0.5% bovine serum albumin. Aliquot and store at -20°C. Minimize freezing and thawing.

## Storage

Aliquot and store at -20°C. Minimize freezing and thawing.

## Note

For research use only

## Application notes

ELISA: Peptide ELISA: antibody detection limit dilution 1:32000. WB: Approx 38kDa band observed in lysates of Human T cell line Jurkat and in Human Lung and Placenta (calculated MW of 40.8kDa according to NP\_057093.1). Recommended concentration: 0.3-1.0 µg/ml. A minor band of unknown identity was also consistently observed at 50kDa in Jurkat and Placenta. This band was successfully blocked by incubation with the immunising peptide. We would appreciate any feedback from people in the field - have any results been reported with other antibodies/lysates Have any further splice variants/modified forms been reported

## Protein Sequence

QKGKVPITYLELLN

## Clonality

Polyclonal

## MW

40.8; 44.3; 43.3; 29.3

## Entrez

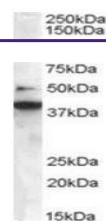
**51100**

## Dilution Range

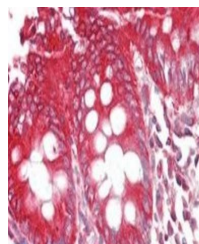
ELISA: 1:32000, WB: 0.3-1.0 µg/ml, IHC-P: 2.5 µg/ml

## Expiration Date

12 months from date of receipt.



Western blot analysis of Jurkat lysate u...



Immunohistochemical staining of Human Co...