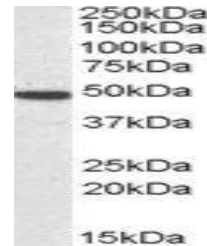


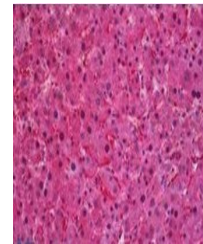
Product Datasheet

SEC61A1 antibody (orb18341)

Description	Goat polyclonal antibody to SEC61A1
Species/Host	Goat
Reactivity	Bovine, Canine, Human, Porcine
Conjugation	Unconjugated
Tested Applications	ELISA, WB
Target	SEC61A1
Preservatives	Supplied at 0.5 mg/ml in Tris saline, 0.02% sodium azide, pH 7.3 with 0.5% bovine serum albumin. Aliquot and store at -20°C. Minimize freezing and thawing.
Storage	Aliquot and store at -20°C. Minimize freezing and thawing.
Note	For research use only
Application notes	ELISA: Peptide ELISA: antibody detection limit dilution 1:8000.WB: Approx 50kDa band observed in Human Brain (Cerebellum) and Mouse Brain lysates (calculated MW of 52.3kDa according to NP_037468.1). Recommended concentration: 1-3 µg/ml.
Protein Sequence	KEQSEVGS MGALLF
Clonality	Polyclonal
MW	52.3
Entrez	29927
Dilution Range	ELISA: 1:16000, WB: 0.3-1 µg/ml
Expiration Date	12 months from date of receipt.



Western blot analysis of Human Cerebellu...



Immunohistochemical staining of Human Li...