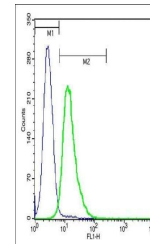


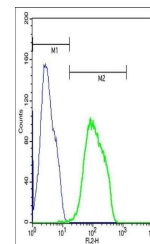
Product Datasheet

Eph receptor A1 antibody (orb183409)

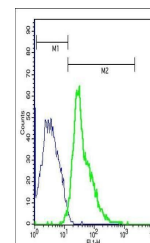
Description	Eph receptor A1 antibody
Species/Host	Rabbit
Conjugation	Unconjugated
Tested Applications	ELISA, ICC, IF, IHC-Fr, IHC-P
Immunogen	KLH conjugated synthetic peptide derived from human Eph receptor A1 (101-200/976 aa)
Target	Eph receptor A1
Preservatives	0.01M TBS(pH7.4) with 1% rAlbumin, 0.03% Proclin300 and 50% Glycerol.
Form/Appearance	Liquid
Concentration	1mg/ml
Storage	Shipped at 4°C. Store at -20 °C for one year. Avoid repeated freeze/thaw cycles.
Note	For research use only
Isotype	IgG
Clonality	Polyclonal
MW	105 kDa
Uniprot ID	P21709
Expiration Date	12 months from date of receipt.



Flow cytometric analysis of U937 cell. u...



Flow cytometric analysis of Mouse Spleno...



Flow cytometric analysis of Mouse Thymoc...