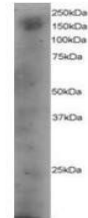


Product Datasheet

DOCK1 antibody (orb18340)

Description	Goat polyclonal to DOCK1
Species/Host	Goat
Reactivity	Bovine, Canine, Human, Mouse, Porcine, Rat
Conjugation	Unconjugated
Tested Applications	WB
Target	DOCK1
Preservatives	Supplied at 0.5 mg/ml in Tris saline, 0.02% sodium azide, pH 7.3 with 0.5% bovine serum albumin. Aliquot and store at -20°C. Minimize freezing and thawing.
Storage	Aliquot and store at -20°C. Minimize freezing and thawing.
Note	For research use only
Application notes	WB: Approx 150-200kDa band seen in A431 cell lysate. Recommended for use at 3-4 µg/ml.
Protein Sequence	TTRKQTSVDSGIVQ
Clonality	Polyclonal
MW	215
Entrez	1793
Dilution Range	WB: 3-4 µg/ml
Expiration Date	12 months from date of receipt.



Western blot analysis of A431 lysate using...