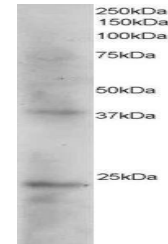


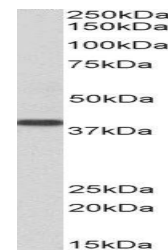
Product Datasheet

SET antibody (orb18339)

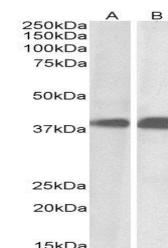
Description	Goat polyclonal antibody to SET
Species/Host	Goat
Reactivity	Bovine, Human
Conjugation	Unconjugated
Tested Applications	ELISA, IHC, WB
Target	SET / I2 alpha PP2A
Preservatives	Supplied at 0.5 mg/ml in Tris saline, 0.02% sodium azide, pH 7.3 with 0.5% bovine serum albumin. Aliquot and store at -20°C. Minimize freezing and thawing.
Storage	Aliquot and store at -20°C. Minimize freezing and thawing.
Note	For research use only
Application notes	ELISA: Peptide ELISA: antibody detection limit dilution 1:1000.WB: Approx 20-25kDa and 40kDa bands seen in Human Kidney extracts. Recommended for use at 1-3 µg/ml.
Protein Sequence	SAPAAKVSKKELNS
Clonality	Polyclonal
MW	32.1
Entrez	6418
Dilution Range	ELISA: 1:128000, WB: 0.3-1 µg/ml
Expiration Date	12 months from date of receipt.



Western blot analysis of Human Kidney using...



Western blot analysis of Human Kidney ly...



Western blot analysis of Daudi (Lane1) a...