

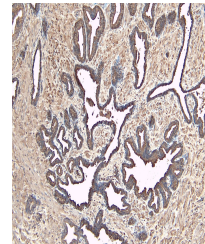
## Product Datasheet

### DUSP1 antibody (orb18338)

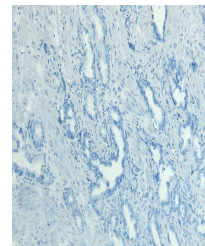
<b>Description</b>	Goat polyclonal antibody to DUSP1
<b>Species/Host</b>	Goat
<b>Reactivity</b>	Bovine, Canine, Human, Mouse, Rat
<b>Conjugation</b>	Unconjugated
<b>Tested Applications</b>	ELISA, IHC, WB
<b>Target</b>	DUSP1
<b>Preservatives</b>	Supplied at 0.5 mg/ml in Tris saline, 0.02% sodium azide, pH 7.3 with 0.5% bovine serum albumin. Aliquot and store at -20°C. Minimize freezing and thawing.
<b>Storage</b>	Aliquot and store at -20°C. Minimize freezing and thawing.
<b>Note</b>	For research use only
<b>Application notes</b>	ELISA: Peptide ELISA: antibody detection limit dilution 1:32000.IHC: In paraffin embedded Human Prostate shows strong cytoplasm staining of secretory cells in the glands. Recommended concentration, 3-5ug/ml.WB: Approx. 40kDa band observed in Human lysates of HeLa (calculated MW of 39.3kDa according to NP_004408.1). Recommended concentration: 0.3-1 µg/ml.
<b>Protein Sequence</b>	SYLQSPITTPSC
<b>Clonality</b>	Polyclonal
<b>MW</b>	39.3
<b>Entrez</b>	<b>1843</b>
<b>Dilution Range</b>	ELISA: 1:64000, WB: 1-3 µg/ml, IHC-P: 8 µg/ml
<b>Expiration Date</b>	12 months from date of receipt.



Western blot analysis of HeLa lysate usi...



Immunohistochemical staining of Human Pr...



Immunohistochemical staining of Human Pr...