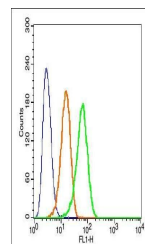


Product Datasheet

beta Defensin 3 antibody (orb183268)

Description	beta Defensin 3 antibody
Species/Host	Rabbit
Reactivity	Human
Conjugation	Unconjugated
Tested Applications	FC, IF
Immunogen	KLH conjugated synthetic peptide derived from human beta Defensin 3 (23-67/67 aa)
Target	beta Defensin 3
Preservatives	0.01M TBS(pH7.4) with 1% rAlbumin, 0.03% Proclin300 and 50% Glycerol.
Form/Appearance	Liquid
Concentration	1mg/ml
Storage	Shipped at 4°C. Store at -20 °C for one year. Avoid repeated freeze/thaw cycles.
Note	For research use only
Isotype	IgG
Clonality	Polyclonal
MW	5 kDa
Uniprot ID	P81534
Dilution Range	IF=1:200-800, Flow-Cyt=1µg/Test, IHC-P=1:100-500, IHC-F=1:100-500, ICC=1:100-500, ELISA=1:5000-10000
Expiration Date	12 months from date of receipt.



Flow cytometric analysis of Hep G2 Cells...