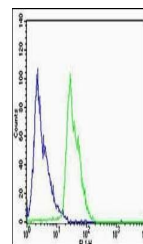


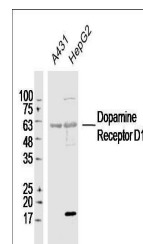
Product Datasheet

Dopamine Receptor D1 antibody (orb183263)

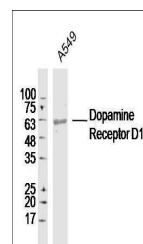
Description	Dopamine Receptor D1 antibody
Species/Host	Rabbit
Reactivity	Human, Rat
Conjugation	Unconjugated
Tested Applications	FC, IHC-P, WB
Immunogen	KLH conjugated synthetic peptide derived from human Dopamine Receptor D1 (11-100/446 aa)
Target	DRD1
Preservatives	0.01M TBS(pH7.4) with 1% rAlbumin, 0.03% Proclin300 and 50% Glycerol.
Form/Appearance	Liquid
Concentration	1mg/ml
Storage	Shipped at 4°C. Store at -20 °C for one year. Avoid repeated freeze/thaw cycles.
Note	For research use only
Isotype	IgG
Clonality	Polyclonal
MW	50 kDa
Uniprot ID	P21728
Dilution Range	WB=1:500-2000, IHC-P=1:100-500, Flow-Cyt=1µg/Test, IHC-F=1:100-500, IF=1:100-500, ELISA=1:5000-10000
Expiration Date	12 months from date of receipt.



Flow cytometric analysis of SH-SY5Y Cell...



Western blot analysis of A431 Cell Human...



Western blot analysis of A549 Cell Human...