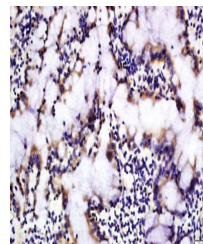


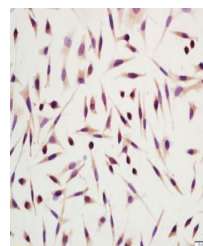
Product Datasheet

DRAM antibody (orb183254)

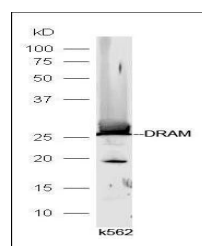
Description	DRAM antibody
Species/Host	Rabbit
Reactivity	Human, Rat
Conjugation	Unconjugated
Tested Applications	ELISA, ICC, IF, IHC-Fr, IHC-P, WB
Immunogen	KLH conjugated synthetic peptide derived from human DRAM (101-200/238 aa)
Target	DRAM
Preservatives	0.01M TBS(pH7.4) with 1% rAlbumin, 0.03% Proclin300 and 50% Glycerol.
Form/Appearance	Liquid
Concentration	1mg/ml
Storage	Shipped at 4°C. Store at -20 °C for one year. Avoid repeated freeze/thaw cycles.
Note	For research use only
Isotype	IgG
Clonality	Polyclonal
MW	26 kDa
Uniprot ID	Q8N682
Expiration Date	12 months from date of receipt.



Immunohistochemical staining of rat colo...



Immunohistochemical staining of human sk...



Western blot analysis of K562 Cell lysat...