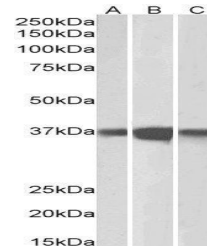


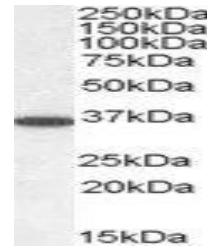
Product Datasheet

PPP2CA / PPP2CB antibody (orb18321)

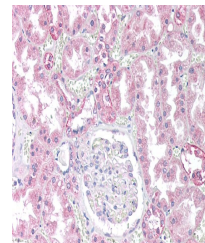
Description	Goat polyclonal antibody to PPP2CA / PPP2CB
Species/Host	Goat
Reactivity	Bovine, Canine, Human, Mouse, Porcine, Rat
Conjugation	Unconjugated
Tested Applications	ELISA, IHC, WB
Target	PPP2CA / PPP2CB
Preservatives	Supplied at 0.5 mg/ml in Tris saline, 0.02% sodium azide, pH 7.3 with 0.5% bovine serum albumin. Aliquot and store at -20°C. Minimize freezing and thawing.
Storage	Aliquot and store at -20°C. Minimize freezing and thawing.
Note	For research use only
Application notes	ELISA: Peptide ELISA: antibody detection limit dilution 1:32000.WB: Approx 35kDa band observed in Human Brain (Cerebellum), Mouse Brain and Rat Brain lysates (calculated MW of 35.6kDa according to NP_002706.1and NP_004147.1). Recommended concentration: 0.05-0.2 µg/ml.
Protein Sequence	EPHVTRRTPDYFL
Clonality	Polyclonal
MW	35.6
Entrez	5515, 5516
Dilution Range	ELISA: 1:128000, WB: 1-3 µg/ml, IHC-P: 10 µg/ml
Expiration Date	12 months from date of receipt.



Western blot analysis of Mouse (Lane1), ...



Western blot analysis of Human Cerebellu...



Immunohistochemical staining of Human Ki...