

Product Datasheet

ORC3L antibody (orb18313)

Description

Goat polyclonal antibody to ORC3L

Species/Host

Goat

Reactivity

Bovine, Canine, Human, Mouse, Rat

Conjugation

Unconjugated

Tested

ELISA, IHC, WB

Applications
Target

ORC3L

Preservatives

Supplied at 0.5 mg/ml in Tris saline, 0.02% sodium azide, pH 7.3 with 0.5% bovine serum albumin. Aliquot and store at -20°C. Minimize freezing and thawing.

Storage

Aliquot and store at -20°C. Minimize freezing and thawing.

Note

For research use only

Application notes

ELISA: Peptide ELISA: antibody detection limit dilution 1:32000. WB: Approx 75kDa band observed in lysates of cell lines HepG2 and HeLa (calculated MW of 82.3kDa according to NP_862820.1 and NP_036513.2). Recommended concentration: 1-3 µg/ml. An additional band of unknown identity was also consistently observed at 35kDa. This band was successfully blocked by incubation with the immunising peptide. We would appreciate any feedback from people in the field - have any such results been reported with other antibodies/lysates Have any further splice variants/modified forms been reported

Protein Sequence

QKTDHVARLTWGGC

Clonality

Polyclonal

MW

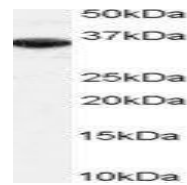
82.3; 82.3; 65.9

Entrez
[23595](#)
Dilution Range

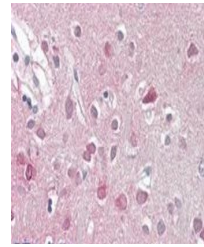
ELISA: 1:32000, WB: 1-3 µg/ml, IHC-P: 3.75 µg/ml

Expiration Date

12 months from date of receipt.

Western blot analysis of HeLa lysate usi...



Immunohistochemical staining of Human Co...