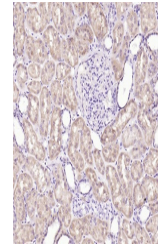


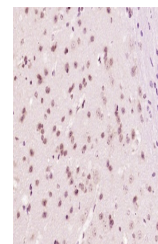
Product Datasheet

DIP2B antibody (orb183112)

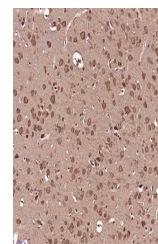
Description	DIP2B antibody
Species/Host	Rabbit
Reactivity	Mouse, Rat
Conjugation	Unconjugated
Tested Applications	IHC-P
Immunogen	KLH conjugated synthetic peptide derived from human DIP2 (25-130/1576 aa)
Target	DIP2B
Preservatives	0.01M TBS(pH7.4) with 1% rAlbumin, 0.03% Proclin300 and 50% Glycerol.
Form/Appearance	Liquid
Concentration	1mg/ml
Storage	Maintain refrigerated at 2-8°C for up to 2 weeks. For long term storage store at -20°C in small aliquots to prevent freeze-thaw cycles.
Note	For research use only
Isotype	IgG
Clonality	Polyclonal
MW	171 kDa
Uniprot ID	Q9P265
Dilution Range	IHC-P=1:100-500, WB=1:500-2000, IHC-F=1:100-500, ICC=1:100-500, IF=1:100-500, ELISA=1:5000-10000
Expiration Date	12 months from date of receipt.



IHC-P analysis of Human kidney using DIP2B antibody



IHC-P analysis of Mouse brain using DIP2B antibody



IHC-P analysis of Rat brain using DIP2B antibody