
Product Datasheet

SOCS1 antibody (orb18302)

Description

Goat polyclonal antibody to SOCS1

Species/Host

Goat

Reactivity

Bovine, Canine, Human, Mouse, Porcine, Rat

Conjugation

Unconjugated

Tested Applications

ELISA, FC, IF, IHC

Target

SOCS1

Preservatives

Supplied at 0.5 mg/ml in Tris saline, 0.02% sodium azide, pH 7.3 with 0.5% bovine serum albumin. Aliquot and store at -20°C. Minimize freezing and thawing.

Storage

Aliquot and store at -20°C. Minimize freezing and thawing.

Note

For research use only

Application notes

ELISA: Peptide ELISA: antibody detection limit dilution 1:4000. IHC: In paraffin embedded Human Kidney shows strong staining of the Brush Border in PCT. Recommended concentration, 2-3µg/ml. WB: In transfected HEK293 transiently expressing human SOCS1 bands of approx. 30kDa and 25kDa are observed. These bands are not observed in the non-transfected HEK293. A similar pattern is observed in Mouse Spleen lysates. The calculated molecular size is 23.6kDa according to Human NP_003736.1 and 23.7kDa according to Mouse NP_034026.1. Recommended concentration, 1-3 µg/ml.

Protein Sequence

VLRDYLSFPFQI

Clonality

Polyclonal

MW

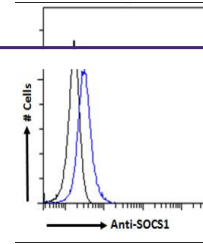
23.6

Entrez
8651
Dilution Range

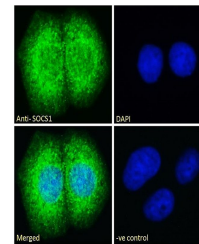
ELISA: 1:4000, IHC-P: 5-10 µg/ml

Expiration Date

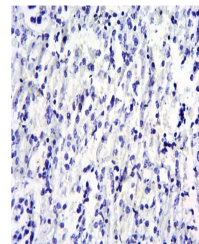
12 months from date of receipt.



Flow cytometric analysis of HEK293 cells...



Immunofluorescence analysis of MCF7 cell...



Immunohistochemical staining of paraffin...