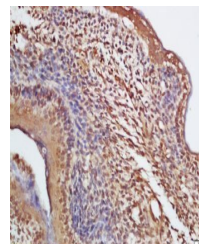


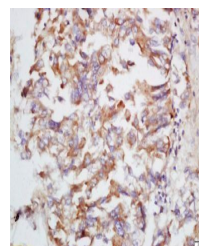
Product Datasheet

DBR1 antibody (orb182990)

Description	DBR1 antibody
Species/Host	Rabbit
Reactivity	Mouse
Conjugation	Unconjugated
Tested Applications	ELISA, ICC, IF, IHC-Fr, IHC-P, WB
Immunogen	KLH conjugated synthetic peptide derived from human DBR1 (451-544/544 aa)
Target	DBR1
Preservatives	0.01M TBS(pH7.4) with 1% rAlbumin, 0.03% Proclin300 and 50% Glycerol.
Form/Appearance	Liquid
Concentration	1mg/ml
Storage	Shipped at 4°C. Store at -20 °C for one year. Avoid repeated freeze/thaw cycles.
Note	For research use only
Isotype	IgG
Clonality	Polyclonal
MW	62 kDa
Uniprot ID	Q9UK59
Expiration Date	12 months from date of receipt.



Immunohistochemical staining of mouse em...



Immunohistochemical staining of human lu...