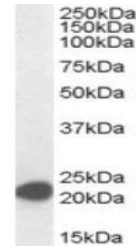


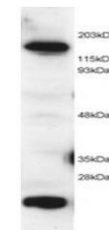
## Product Datasheet

### MAX antibody (orb18299)

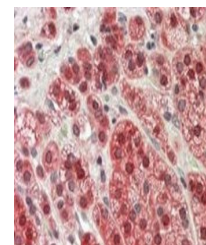
<b>Description</b>	Goat polyclonal antibody to MAX
<b>Species/Host</b>	Goat
<b>Reactivity</b>	Bovine, Canine, Human, Mouse, Rat
<b>Conjugation</b>	Unconjugated
<b>Tested Applications</b>	ELISA, IF, IHC, WB
<b>Target</b>	MAX
<b>Preservatives</b>	Supplied at 0.5 mg/ml in Tris saline, 0.02% sodium azide, pH 7.3 with 0.5% bovine serum albumin. Aliquot and store at -20°C. Minimize freezing and thawing.
<b>Storage</b>	Aliquot and store at -20°C. Minimize freezing and thawing.
<b>Note</b>	For research use only
<b>Application notes</b>	ELISA: Peptide ELISA: antibody detection limit dilution 1:32000.WB: Approx 23kDa band seen in Jurkat Lysates. Recommended for use at 0.5-2 µg/ml.
<b>Protein Sequence</b>	EEPQSRKKLRMEAS
<b>Clonality</b>	Polyclonal
<b>MW</b>	18.3; 17.2
<b>Entrez</b>	<a href="#">4149</a>
<b>Dilution Range</b>	ELISA: 1:32000, WB: 0.01-0.03 µg/ml, IHC-P: 10 µg/ml
<b>Expiration Date</b>	12 months from date of receipt.



Western blot analysis of Jurkat lysate u...



Western blot analysis of HeLa lysate usi...



Immunohistochemical staining of Human Ad...