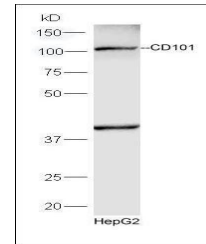


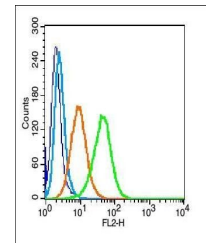
Product Datasheet

CD101 antibody (orb182947)

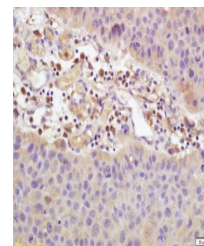
Description	CD101 antibody
Species/Host	Rabbit
Reactivity	Human
Conjugation	Unconjugated
Tested Applications	FC, IF, WB
Immunogen	KLH conjugated synthetic peptide derived from human CD101 (51-150/1021 aa)
Target	CD101
Preservatives	0.01M TBS(pH7.4) with 1% rAlbumin, 0.03% Proclin300 and 50% Glycerol.
Form/Appearance	Liquid
Concentration	1mg/ml
Storage	Shipped at 4°C. Store at -20 °C for one year. Avoid repeated freeze/thaw cycles.
Note	For research use only
Isotype	IgG
Clonality	Polyclonal
MW	113 kDa
Uniprot ID	Q93033
Dilution Range	WB=1:500-2000, IF=1:10-100, Flow-Cyt=1µg/Test, IHC-P=1:100-500, IHC-F=1:100-500, ICC=1:100-500, ELISA=1:5000-10000
Expiration Date	12 months from date of receipt.



Western blot analysis of HepG2 lysates u...



Flow cytometric analysis of U937 cell us...



Immunohistochemical staining of human bl...