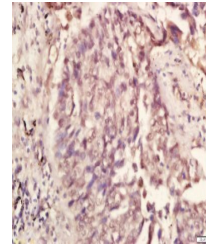


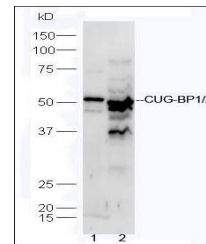
Product Datasheet

CUG-BP1/2 antibody (orb182891)

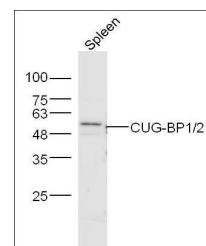
Description	CUG-BP1/2 antibody
Species/Host	Rabbit
Reactivity	Human, Mouse, Rat
Conjugation	Unconjugated
Tested Applications	IHC-P, WB
Immunogen	KLH conjugated synthetic peptide derived from human CUG-BP1 and CUG-BP2 (421-508/508 aa)
Target	CUG-BP1/2
Preservatives	0.01M TBS(pH7.4) with 1% rAlbumin, 0.03% Proclin300 and 50% Glycerol.
Form/Appearance	Liquid
Concentration	1mg/ml
Storage	Shipped at 4°C. Store at -20 °C for one year. Avoid repeated freeze/thaw cycles.
Note	For research use only
Isotype	IgG
Clonality	Polyclonal
MW	54 kDa
Uniprot ID	O95319
Dilution Range	WB=1:500-2000, IHC-P=1:100-500
Expiration Date	12 months from date of receipt.



Immunohistochemical staining of human lu...



Western blot analysis of mouse spleen ce...



Western blot analysis of extracts from s...