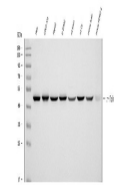


## Product Datasheet

# Gamma-Tubulin GGA3 Antibody (Monoclonal, GTU-88) (orb18289)

<b>Description</b>	Gamma-Tubulin GGA3 Antibody (Monoclonal, GTU-88)
<b>Species/Host</b>	Mouse
<b>Reactivity</b>	Human, Mouse, Rat
<b>Conjugation</b>	Unconjugated
<b>Tested Applications</b>	ICC, WB
<b>Immunogen</b>	Synthetic gamma-tubulin peptide (amino acids 38-53), conjugated to KLH.
<b>Form/Appearance</b>	Lyophilized
<b>Concentration</b>	Adding 1 ml of PBS buffer will yield a concentration of 100 µg/ml.
<b>Storage</b>	Store at -20°C for one year from date of receipt. After reconstitution, at 4°C for one month. It can also be aliquotted and stored frozen at -20°C for six months. Avoid repeated freeze-thaw cycles.
<b>Note</b>	For research use only
<b>Application notes</b>	Other applications have not been tested. Optimal dilutions should be determined by end users. . Add 1ml of PBS buffer will yield a concentration of 100ug/ml.
<b>Isotype</b>	Mouse IgG1
<b>Clonality</b>	Monoclonal
<b>MW</b>	71715 MW
<b>Uniprot ID</b>	<b>D3ZHG8</b>
<b>Expiration Date</b>	12 months from date of receipt.



WB analysis of Gamma-Tubulin using anti-  
...