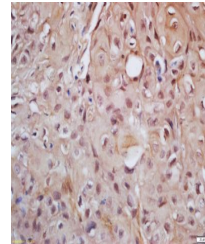


Product Datasheet

Cyclin H (phospho-Thr315) antibody (orb182830)

Description	Cyclin H (phospho-Thr315) antibody
Species/Host	Rabbit
Reactivity	Human
Conjugation	Unconjugated
Tested Applications	ELISA, ICC, IF, IHC-Fr, IHC-P
Immunogen	KLH conjugated Synthesised phosphopeptide derived from human Cyclin H around the phosphorylation site of Thr315 (EW(p-T)DD)
Target	phospho-Cyclin H (Thr315)
Preservatives	0.01M TBS(pH7.4) with 1% rAlbumin, 0.03% Proclin300 and 50% Glycerol.
Form/Appearance	Liquid
Concentration	1mg/ml
Storage	Shipped at 4°C. Store at -20 °C for one year. Avoid repeated freeze/thaw cycles.
Note	For research use only
Isotype	IgG
Clonality	Polyclonal
MW	34 kDa
Uniprot ID	P51946
Expiration Date	12 months from date of receipt.



Immunohistochemical staining of human la...