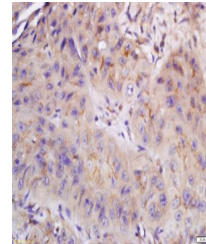


Product Datasheet

CYB5R4 antibody (orb182826)

Description	CYB5R4 antibody
Species/Host	Rabbit
Reactivity	Human, Mouse, Rat
Conjugation	Unconjugated
Tested Applications	IHC, WB
Immunogen	KLH conjugated synthetic peptide derived from human CYB5R4 (21-120/521 aa)
Target	CYB5R4
Preservatives	0.01M TBS(pH7.4) with 1% rAlbumin, 0.03% Proclin300 and 50% Glycerol.
Form/Appearance	Liquid
Concentration	1mg/ml
Storage	Shipped at 4°C. Store at -20 °C for one year. Avoid repeated freeze/thaw cycles.
Note	For research use only
Application notes	IHC-P=1:100-500, IHC-F=1:100-500,WB=1:500-2000
Isotype	IgG
Clonality	Polyclonal
MW	59 kDa
Uniprot ID	Q7L1T6
Dilution Range	IHC-P=1:100-500, IHC-F=1:100-500,WB=1:500-2000
Expiration Date	12 months from date of receipt.



Immunohistochemical staining of human la...