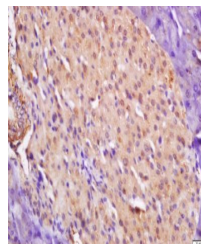


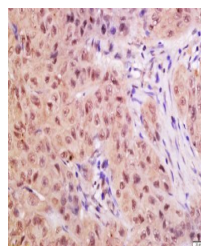
Product Datasheet

CTDSP2 antibody (orb182793)

Description	CTDSP2 antibody
Species/Host	Rabbit
Reactivity	Human, Rat
Conjugation	Unconjugated
Tested Applications	ELISA, ICC, IF, IHC-Fr, IHC-P
Immunogen	KLH conjugated synthetic peptide derived from human CTDSP2 (25-150/271 aa)
Target	CTDSP2
Preservatives	0.01M TBS(pH7.4) with 1% rAlbumin, 0.03% Proclin300 and 50% Glycerol.
Form/Appearance	Liquid
Concentration	1mg/ml
Storage	Shipped at 4°C. Store at -20 °C for one year. Avoid repeated freeze/thaw cycles.
Note	For research use only
Isotype	IgG
Clonality	Polyclonal
MW	31 kDa
Uniprot ID	O14595
Expiration Date	12 months from date of receipt.



Immunohistochemical staining of rat panc...



Immunohistochemical staining of human la...